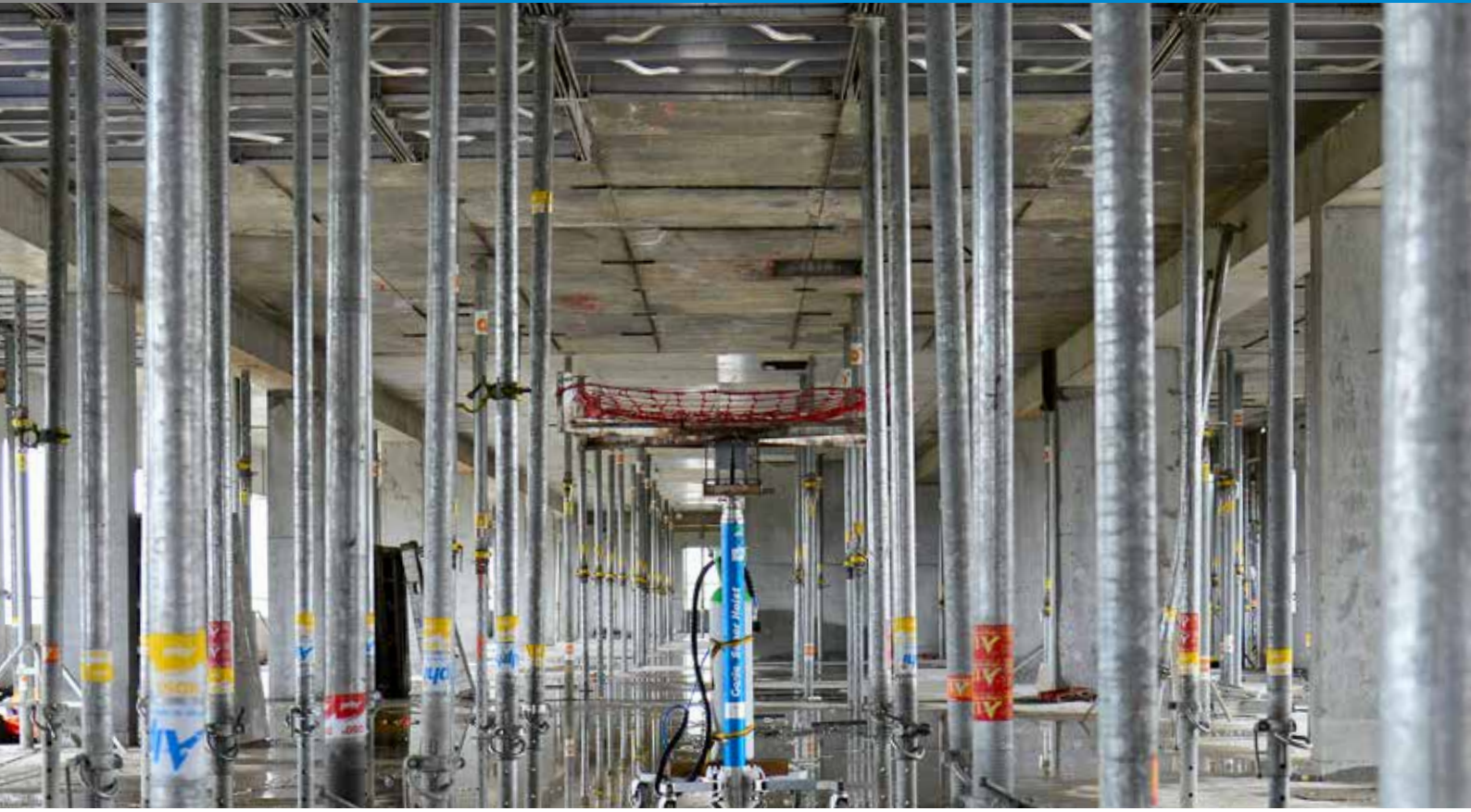


MaxUPDown



An easier use of MaxiDalle

Alphi[®]
Formwork and solutions

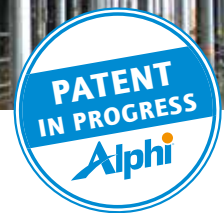
MaxUPDown

An easier use of MaxiDalle



MaxUp is a system that allows an effortless assembly of the formwork panels MaxiDalle on the heads of props.

MaxDown is a system to facilitate the removal of MaxiDalle panels, at great height. A safety net receives and secures the descent of the panel.



Productivity



- Increased productivity by 33%.
- 2 workers are sufficient for the installation or the removal of a panel in 120 cm, whatever the height.
- 1 person can do the handling alone with a panel in 90 cm.
- Telescopic mast, operating with compressed air, up to a height of 5.6 m.

Safety



- The workers operate from the ground (No more need for an IORL).

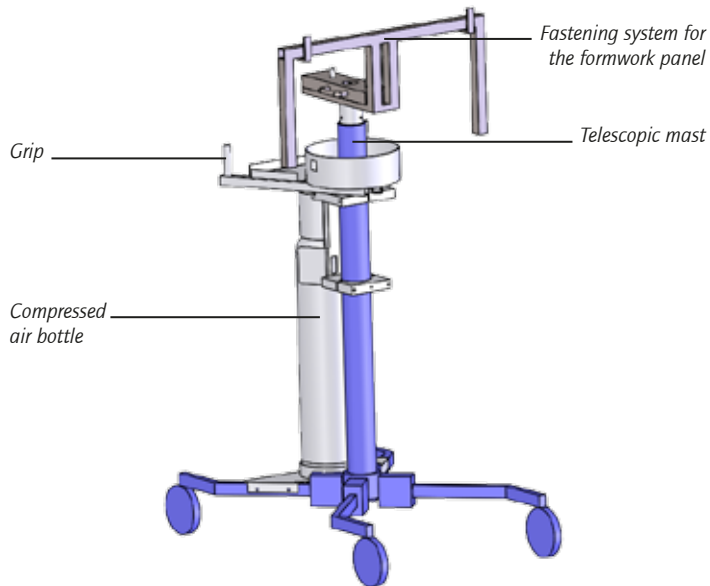
Arduousness



- MaxUp and MaxDown meet ALPHI's policy regarding prevention of MSD and fight against painfulness.
- The workers no longer have to handle heavy loads in heights.



Setting up of the MaxiDalle with the MaxUp



Weight of the mast with the bottle of 74 kg

Installation of the panel on the MaxUp



- The panel is placed vertically on the MaxUp.
- Lift the panel and place it on the brackets of the hooking system. The hooks will be engaged in the inner secondary profile of the panel.

Positioning of the panel over the props



- Lift the panel thanks to the telescopic mast system.



- Move the MaxUp in order to place the panel over the 2 props.

Fastening of the panel on the props



- Lower the panel so that the 2 upper corners snap to the MaxiDalle base.
- Once the panel is held by the props, lower the MaxUp and then, remove it from behind.

Horizontal Layout of the panel



- Tilt the panel horizontally using the dedicated pole.

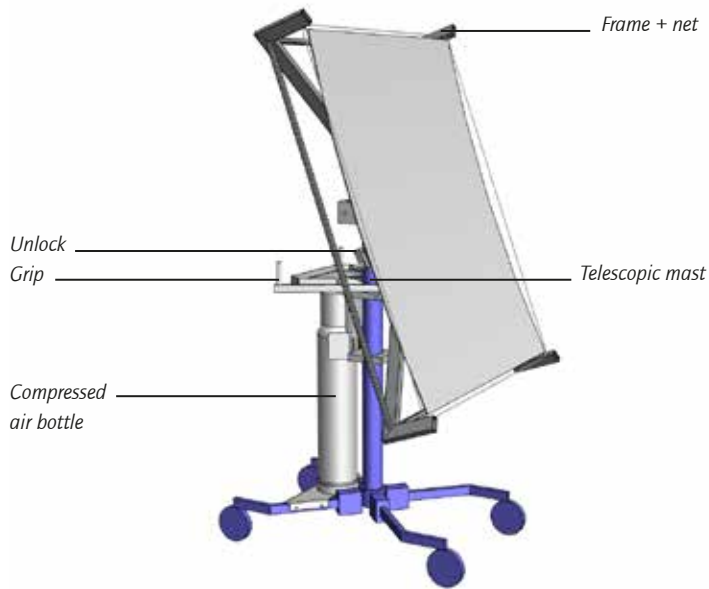


- Position the prop at the junction of the 2 panels.
- Renew the operation for the whole area.

MaxDown

Operating Procedure

Removal of the MaxiDalle with the MaxDown



Weight of the mast with the bottle of 96 kg

Position the MaxDown



- After removal of the 2 props located at the front of the panel to take down, position the MaxDown under the panel.
- The frame must be positioned as close as possible to the 2 props still in place, making sure that it does not interfere with the disassembly during the following steps.
→ The MaxDown frame must be placed in the same direction than the panel to take down. Thereby, this last one will so keep very stable during the switching in a vertical position at the last step.

Mount the MaxDown



- The MaxDown frame is then raised until the net comes into contact with the panel.
- The two props that still hold the panel are removed. The panel remains, in most cases, plated to the slab.

Separation of the panel



- The panel is peeled off with a pole.
- The tip of the pole can be slipped into a mesh of the net and positioned in the side hole of the panel. A simple movement of rotation then allows the panel to descend into the net.

Bring down the MaxDown



- When the panel is detached from the slab, the MaxDown can be lowered.

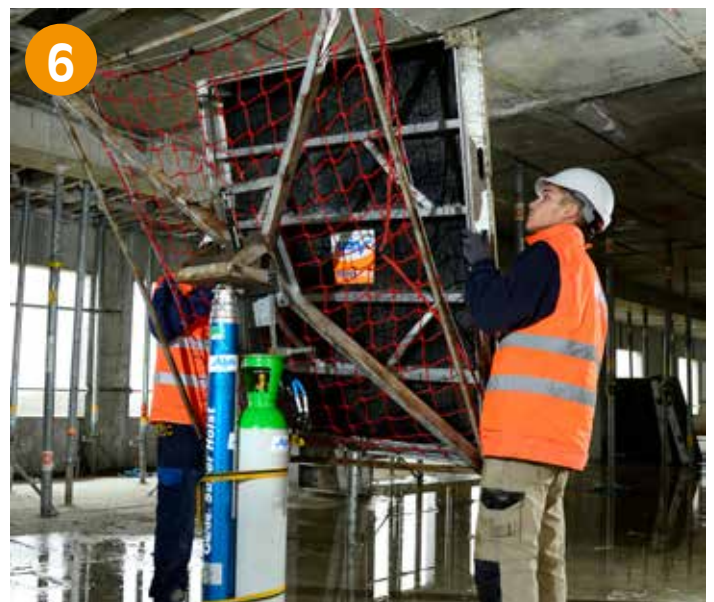
→ The operation is carried out safely, even if the panel slightly overlaps the net due to the fact that the center of gravity of the panel is placed inside of the frame.

Switch the frame

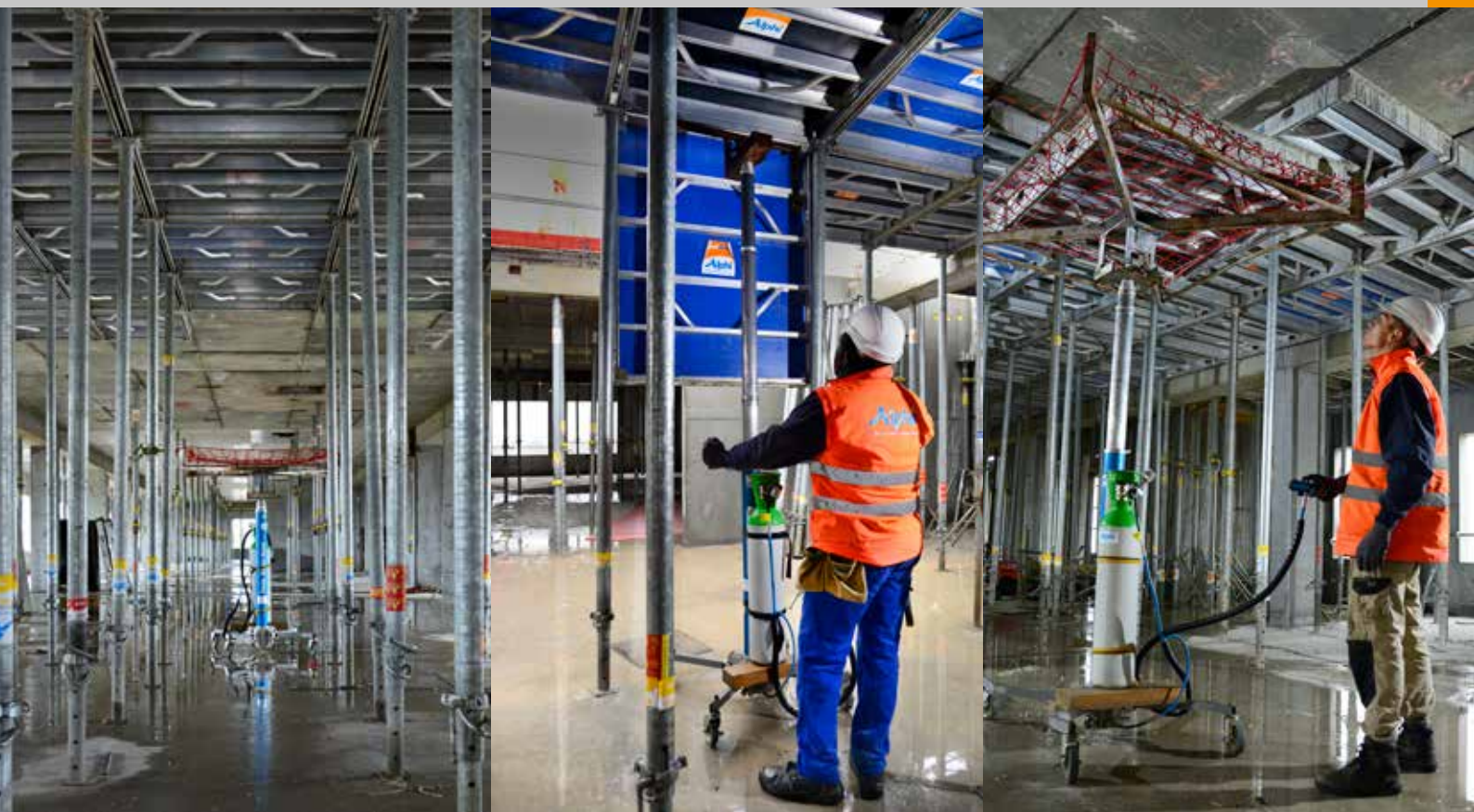


- At the end of the descent, activate the unlocking in order to allow the frame to switch.

Two operators only



- When the frame comes to a stop, the panel can be retrieved by 2 persons (in case of a 120 cm panel).



Alphi, the French leader in slab formwork

Alphi
Formwork and solutions

4 rue de Bitbourg - L-1273 Luxembourg
Tel. +352 266 877 81 - Fax +352 287 723 76 - info@alphilux.lu
Design department: +33 (0)4 79 61 85 91 - be@alphilux.lu
Logistics department: +33 (0)4 79 61 85 92

www.alphilux.lu

French design