

# Alto<sup>®</sup>

SHORING



SAFETY

SLINGING

ADAPTABILITY

A COMPLETE DECK  
RANGE

**Alphi**<sup>®</sup>  
*Lux*  
Formworks & Solutions



# Alto

Alto decks come in **3 sizes**. All decks are equipped with **safety** features and accessories that facilitate **handling**.

The **AlphiSafe** safety system can be mounted at ground level.

Retractable **hoisting rings** are built into the deck. The slinging procedure is completely safe, from laying on the ground to the definitive positioning of the deck.

## Practical uses

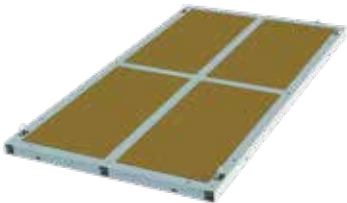
The Alto deck can be used in various configurations and can serve as:

- a work surface for workers,
- a traffic surface for easier access,
- a surface for receiving slab formwork such as TopDalle, MaxiDalle, etc.
- a support zone for form panels and ballasts.

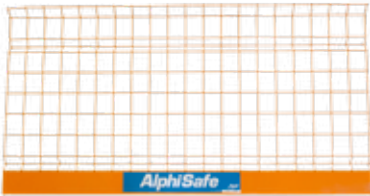




*Site: Comurhex II  
conversion plant  
Client: GTM Sud,  
SM Entreprise  
Location: Narbonne*



## COMPONENT

| Decks | Alto  | External dimensions (m) | Total surface area (m <sup>2</sup> ) | Weight of panel (kg) | Plywood type             | Maximum allowable load (kN/m <sup>2</sup> ) |
|-------|---|-------------------------|--------------------------------------|----------------------|--------------------------|---|
|       |  | 4.40 x 1.40             | 6.16                                 | 225.00               | Multi-ply<br>27 mm thick | 15  |
|       |   | 2.40 x 2.26             | 5.42                                 | 235.00               |                          |   |
|       |   | 4.40 x 2.40             | 10.56                                | 435.00               |                          |   |

## ALTO ACCESSORIES

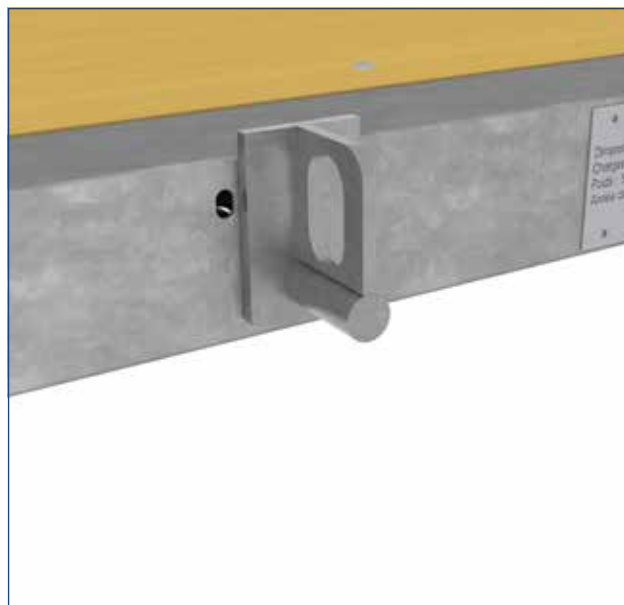
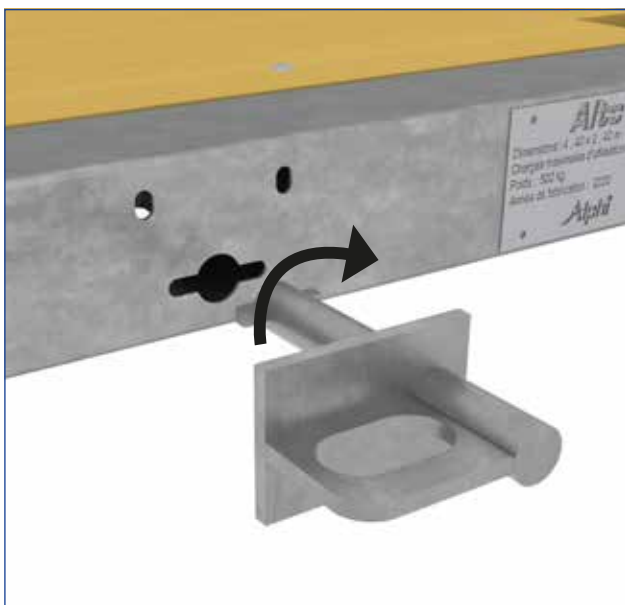
| Safety  | Grid*   | Dimensions (m) | Weight (kg)                        | Description  |
|---|---|----------------|------------------------------------|--|
|   |  | 1.25 x 1.30    | 7.60                               | The wire grid is galvanised, with polyester powder coating |
|   |   | 2.40 x 1.30    | 13.90                              |  |
|   |   | 2.50 x 1.30    | 14.50                              |  |
| Galvanised post*  | Cross-section (cm)  | Height (m)     | Weight (kg)                        |  |
|  | 3.5 x 3.5   | 1.34           | 3.50                               |  |
| Adapter*  | Name  | Weight (kg)    | * Compliant with EN 13374 standard |  |
|  | Alto adapter  | 1.96           |                                    |  |

## ALTO ACCESSORIES

|   |  |  |
|---|--|--|
| Handling  | Hoisting eye   | Description  |
|   |   | <ul style="list-style-type: none"> <li>Lifting/sliding</li> </ul>                  |
|   | Lifting beam   | Description  |
|   |  | <ul style="list-style-type: none"> <li>For lifting and moving Alto deck</li> </ul> |
| Deck clamp  | Description  |  |
|  | <ul style="list-style-type: none"> <li>Securing Alto deck to a skin</li> </ul>     |  |

## DIFFERENT COUPLING METHODS

### HOISTING EYE



- When slinging the panel, make sure no material or equipment is stored on the Alto deck.
- Eight slots are located all over the Alto panel to insert quarter-turn hoisting eyes.

- Hoisting eye in use.

### HOISTING RING



- Built-in retractable hoisting rings.

**NB:** Regardless of the configuration selected, Alto decks must be handled individually.

## PROCEDURE WITH SLING



- Use of a sling with four 4-m long strands.
- Each strand and its hook should have a minimum MWL of 1 tonne.
- Sling the Alto deck, with safety system mounted on the ground.



- Set up towers according to the plan provided and position the Alto decks on the primaries.



- Check that the deck is correctly positioned on the towers (distance from base to edge of deck < 60 cm).



- Install the other decks.
- **Warning (stability):** comply with the layout plan and Alphi recommendations.

## PROCEDURE WITH LIFTING BEAM

1



- A lifting beam should be used when the use of slings is not authorised (areas with no crane access).
- However, installation with slings is the preferred method.
- The position of the Alto deck should be centred on the lifting beam forks so as to balance the loads.

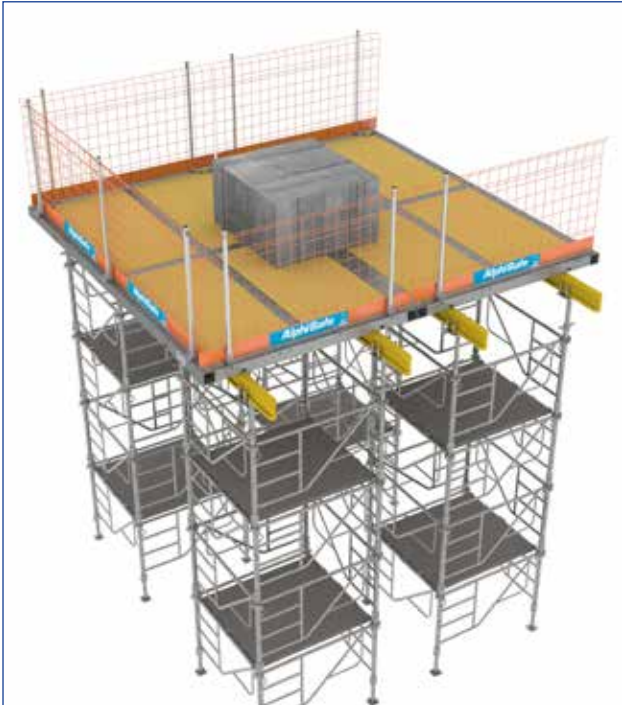
2



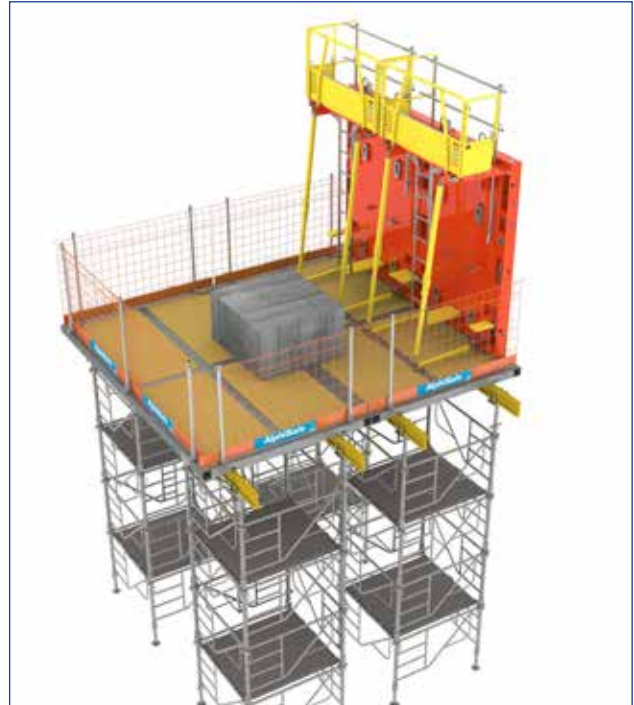
- Warning (stability): limit overhangs to prevent the risk of tipping.



## USE FOR FORM PANEL SUPPORT



- Installation of the form panel ballast.



- Form panel installation



- **WARNING (stability):** in the context of a point load such as form panel ballast, comply with the plans provided and the specific procedures.

### NB:

- Use form panel ballast of weight not exceeding 2t (120 x 120 x 60 cm).
- Use form panel of weight not exceeding 1t/m.

## ALPHI, FRANCE'S LEADING SLAB FORMWORK MANUFACTURER



Alto decks can be used to create platforms on shoring towers and work surfaces for form panels, material stockpiles, prefabricated components and front face overhangs.

**4 rue de Bitbourg**

L-1273 Luxembourg

Tel. +352 266 877 81 - Fax +352 287 723 76 - [info@alphilux.lu](mailto:info@alphilux.lu)

Design office: Tel. +33 (0)4 79 61 85 91 - [be@alphilux.lu](mailto:be@alphilux.lu)

Logistic department: Tel. +33 (0)4 79 61 85 92

**Alphi**  
**Lux**  
Formworks & Solutions

Designed in France 

[www.alphilux.lu](http://www.alphilux.lu)